



25th April, 2021



Recycling in Germany be like...

Mathworks_video1



Q1. So you think you can Trash?



Q2. To Re or not to Re?



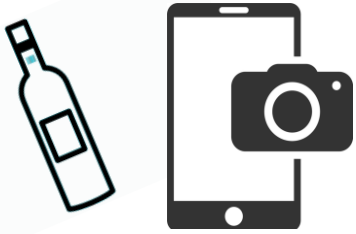
Recycling



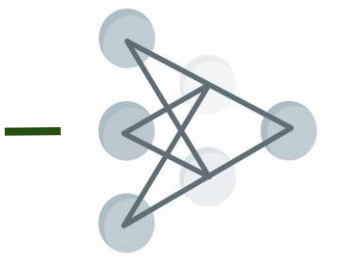
Upcycling



How TryCycle works



User input



Object recognition



Recycling

Upcycling

Suggestions

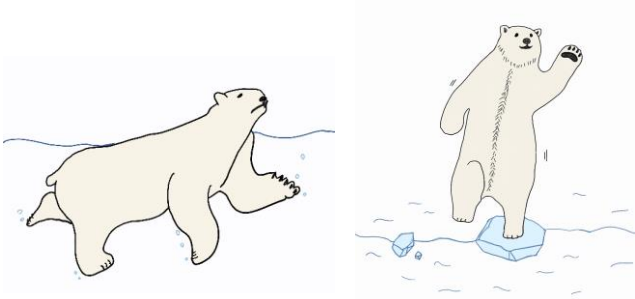


Statistics

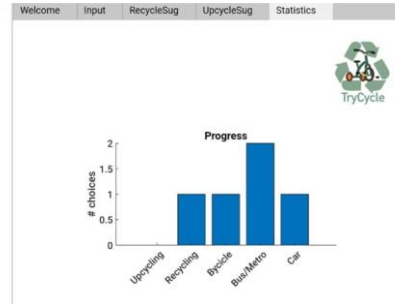
How TryCycle works



Visual rewards based on Internal Scoring metrics



Community participation- Statistics & Score board



Object Recognition



Transfer learning

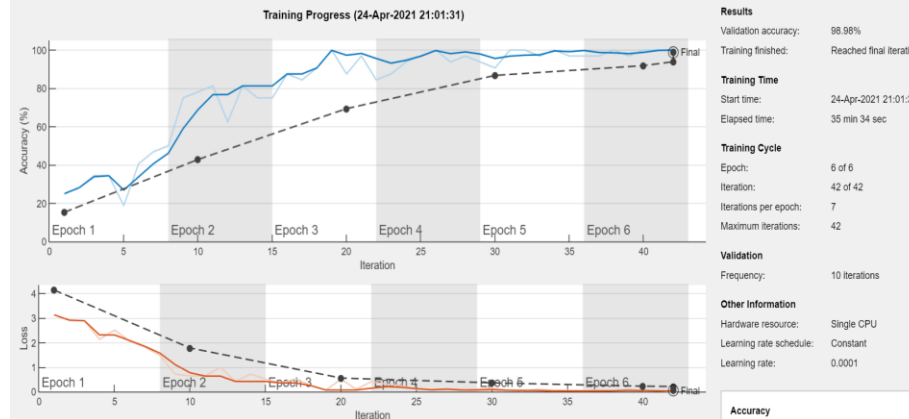
Data Collection

Training

Assessment

Resnet101

98,98%



TryCycle Demo

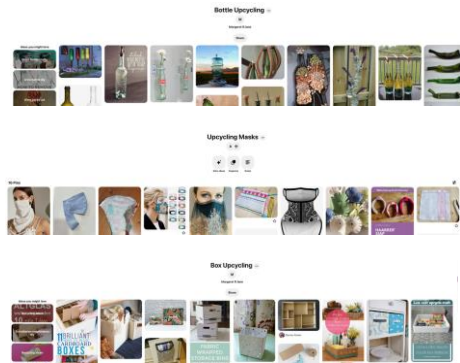
Mathworks_video2



TryCycle provides:



Segregation Guidelines



Community-based Suggestions



User friendly statistics visualization

TryCycle could be improved:



Data +



Material & Objects +

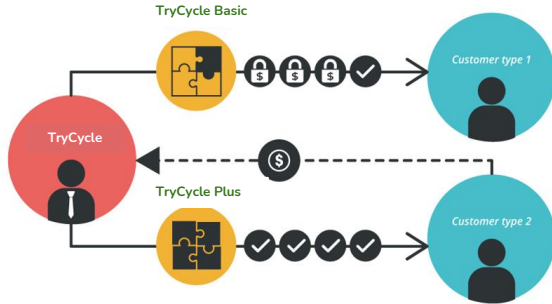


Community
Functionality ++



TryCycle Case Study

Freemium Model



TryCycle Basic

1. Segregation Suggestion
2. Impact Scores
3. Community Interaction and Scoring

TryCycle Plus

1. Exclusive discounts on products from select Sellers
2. Completely Ad-free
3. Connect with Environmental Experts
4. Community Marketplace

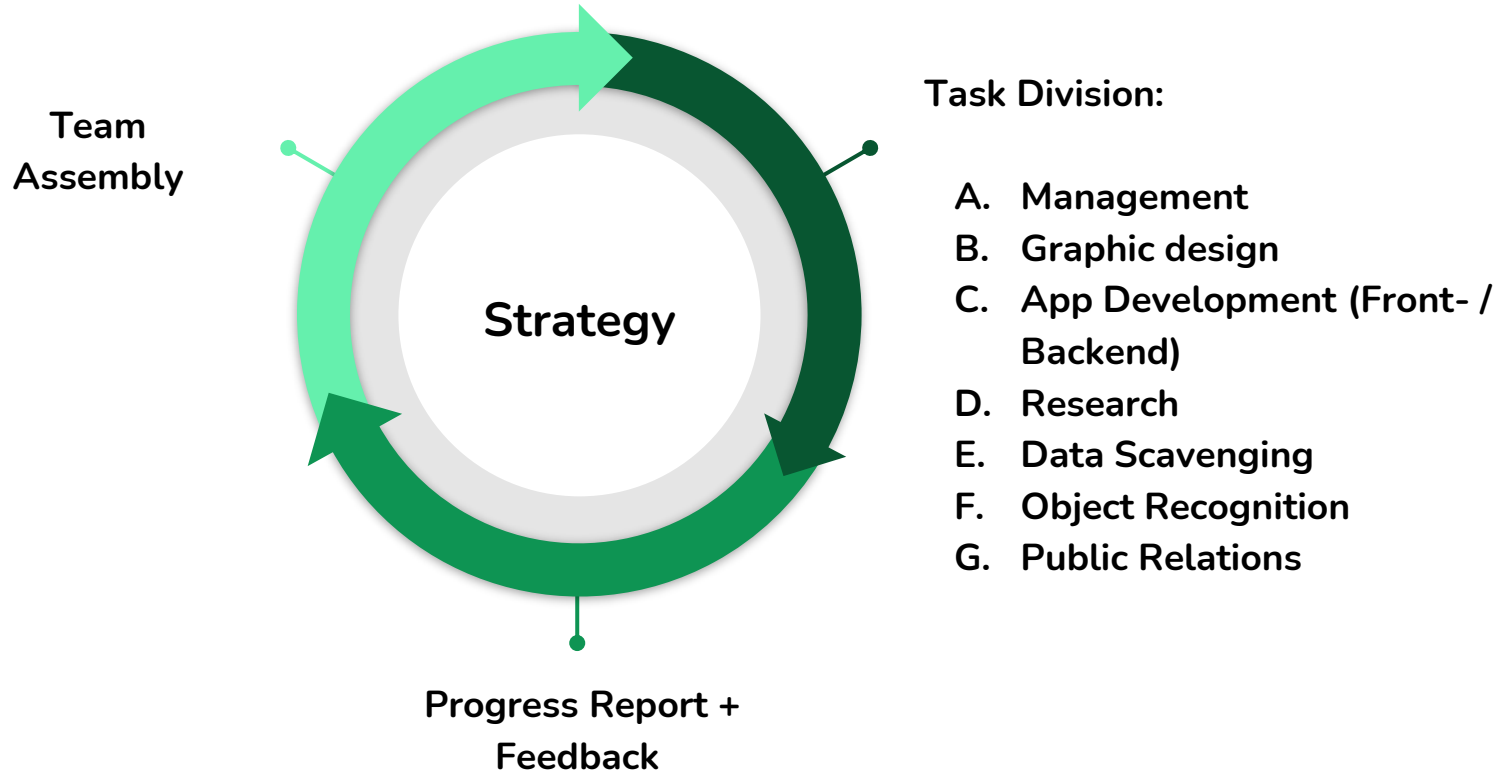
Donation-based Model



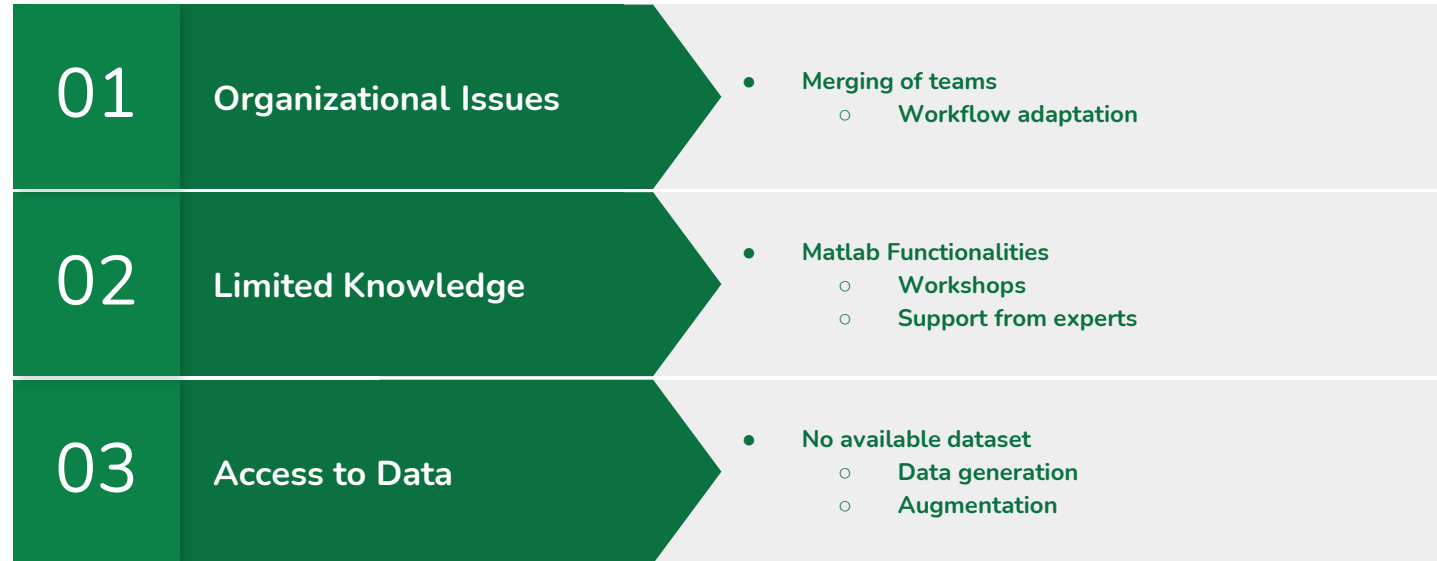
TryCycle Pro

1. Segregation Suggestion
2. Impact Scores
3. Community Interaction and Scoring
4. Local Industrial footprint statistics
5. Local Environmental Metrics

TryCycle Workflow



Problem Management



Team TryCycle



Harald Julia Kathi Sagar Sebastian Suresh



Developing
apps on
iOS/Android



Developing
apps
on Matlab